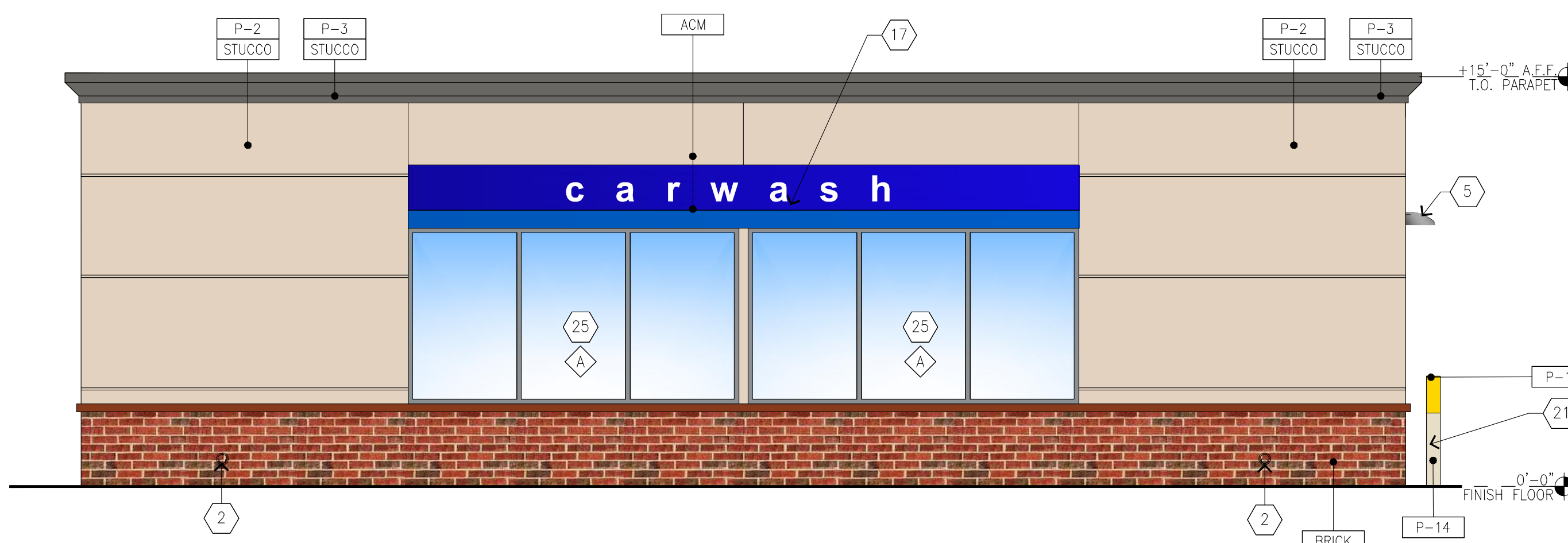
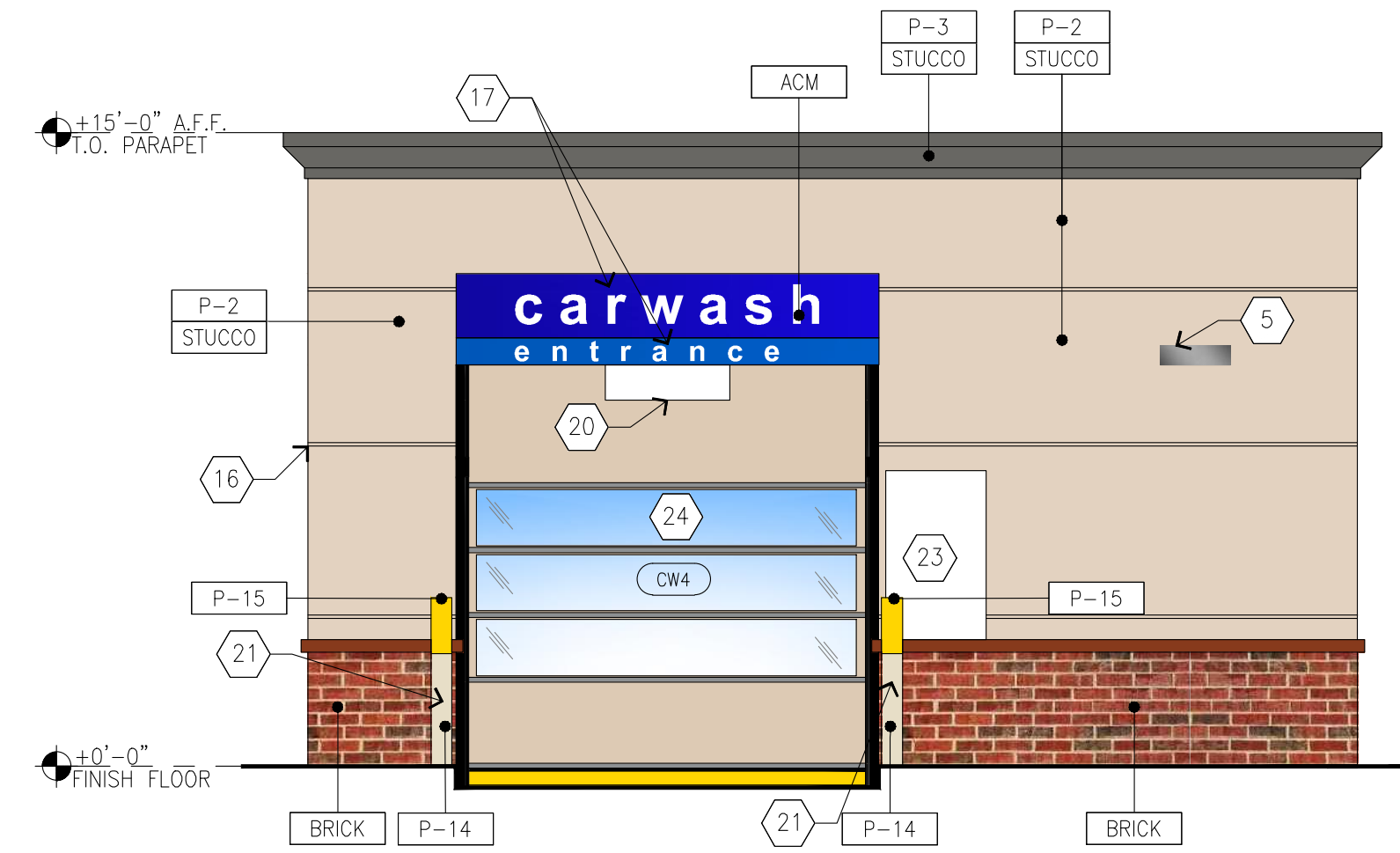


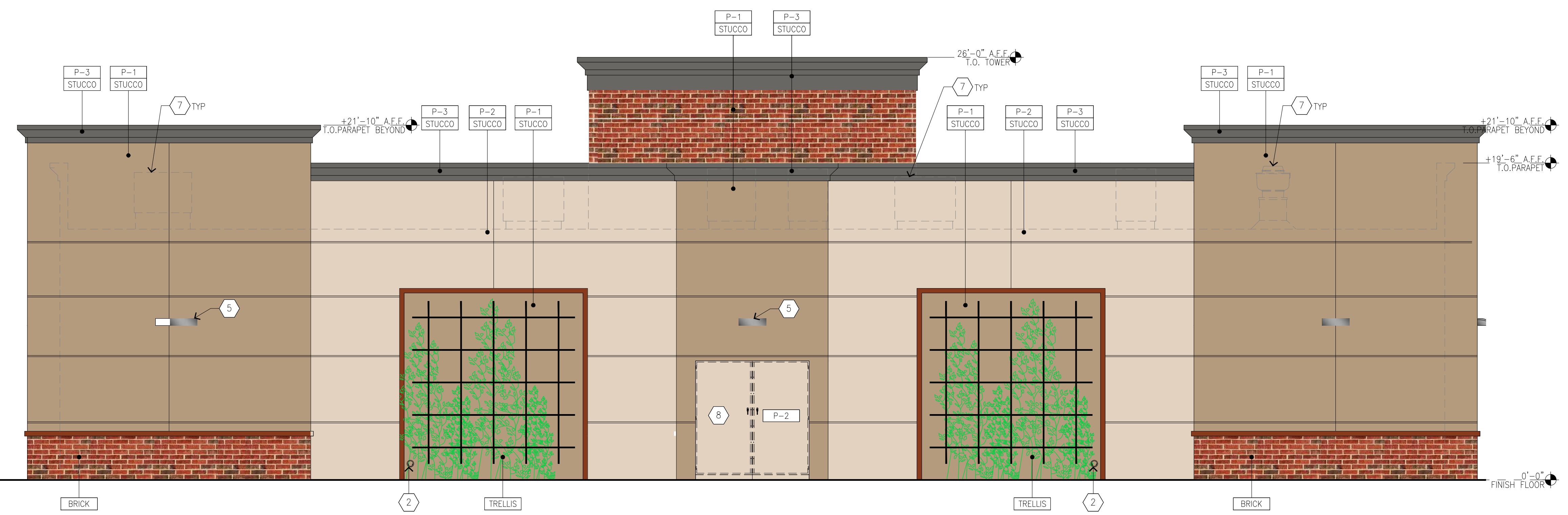
05 EAST ELEVATION  
SCALE: 1/4"=1'-0"



06 EAST ELEVATION (CAR WASH)  
SCALE: 1/4"=1'-0"



07 NORTH ELEVATION (CAR WASH)  
SCALE: 1/4"=1'-0"



08 NORTH ELEVATION  
SCALE: 1/4"=1'-0"

**COLOR LEGEND**

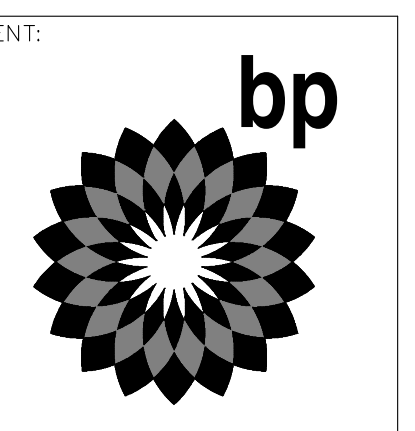
- P-1 BENJAMIN MOORE, 1077 "GREAT PLAINS GOLD", SATIN FINISH
- P-2 BENJAMIN MOORE, 1030 "BRANDY CREAM", SATIN FINISH
- P-3 BENJAMIN MOORE, HC-166 "KINDALL CHARCOAL"
- P-14 BP PEARL - BENJAMIN MOORE, OC-8, "ELEPHANT TUSK"
- P-15 BP YELLOW - BENJAMIN MOORE, 2022-10, "YELLOW"

**MATERIAL LEGEND**

- ACM-1 ALUMINUM COMPOSITE MATERIAL, SHERWIN WILLIAM SW 6272 "PLUM BROWN"
- ACM-2 ALUMINUM COMPOSITE MATERIAL, ALUCOBOND, "RUSTIC WALNUT"
- STUCCO 3/8" CEMENT PLASTER, INSTALLED PER MFG. SPECIFICATIONS; TEXTURE: FINE SAND FINISH
- ALUM CLEAR ANODIZED ALUMINUM
- STL-1 STEEL AWNING
- BRICK BRICK VENEER
- TRELIS TRELIS

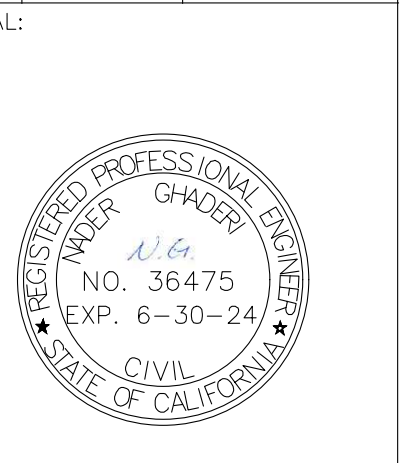
**GENERAL NOTES**

- A. REVEAL LOCATIONS IN FINISH SYSTEM SHOWN ARE TO ALIGN AS CLOSELY AS POSSIBLE TO ELEVATIONS.
- KEYED NOTES**
- 1 ALUMINUM ENTRANCE AND STOREFRONT SYSTEM, REFER TO SHEET AS.1 FOR SPECIFICATION
  - 2 OVERFLOW DRAIN
  - 3 N/A
  - 4 LARGE INTERNALLY ILLUMINATED SURFACE MOUNTED WALL SIGN
  - 5 WALL MOUNTED LED FIXTURE
  - 6 WALL MOUNTED SIGN LIGHTING
  - 7 ROOFTOP EQUIPMENT BEYOND
  - 8 MAIN SWITCHGEAR
  - 9 CO2 FILL/VENT BOX, VERIFY LOCATION PRIOR TO INSTALLATION
  - 10 AWNING ROD AND CLEVIS, REFER TO SHEET A1.4 AND STRUCTURAL PLANS FOR DETAILS
  - 11 CANOPY DOWNSPOUT FINISH TO MATCH STOREFRONT, REFER TO CIVIL PLANS FOR CONTINUATION
  - 12 TRADITIONAL CEMENT TRASH RECEPTACLE, REFER TO SHEET Q2.1 FOR SPECIFICATION
  - 13 PORTABLE PROPANE TANK DISPLAY, REFER TO SHEET Q2.1 FOR SPECIFICATION
  - 14 EMERGENCY SHUT OFF SWITCH, VERIFY LOCATION PRIOR TO INSTALLATION, REFER TO ELECTRICAL SHEETS FOR SPECIFICATIONS
  - 15 AIR CURTAIN BEYOND, REFER TO SHEET A2.3 AND MECHANICAL PLANS
  - 16 1" REVEAL
  - 17 VINYL LETTERS APPLIED TO ACM
  - 18 N/A
  - 19 "NO ENTRY" SIGN
  - 20 OVERHEAD CLEARANCE BAR
  - 21 CONCRETE FILLED BOLLARD, REFER TO DETAIL 5/CWA4.2
  - 22 METAL DOOR & FRAME
  - 23 INSTRUCTIONAL SIGN PANEL
  - 24 VINYL ROLL UP DOOR, COLOR: BEIGE, REFER TO SHEET CW01.1
  - 25 WASH BAY WINDOWS



BP WEST COAST PRODUCTS, LLC

NO.	DATE	DESCRIPTION
1	05/25/2022	IJ
2	08/22/2022	IJ
3	09/14/2022	IJ
4		
5		
6		
7		
8		
9		
10		
11		
12		
13		
14		
15		
16		
17		
18		
19		
20		
21		
22		
23		
24		
25		



PLANS PREPARED BY:  
**A & S ENGINEERING INC.**  
 PLANNING ENGINEERING CONSULTING MANAGEMENT  
 2845 SAND CANYON ROAD, SUITE B  
 SAND CANYON, CA 91387  
 PHONE #: (818) 250-9300; FAX #: (818) 250-9333

DEVELOPMENT INFORMATION:

SITE ADDRESS:  
**ADDRESS**  
 1830 BLUE OAKS BL  
 ROSEVILLE, CA 95747

DESIGNED BY:  
 CHECKED BY:  
 DRAWN BY:  
 DATE: PROJECT NO:

DRAWING TITLE:  
**EXTERIOR ELEVATIONS**

SHEET NO:  
**A2.2**

**SIGNAGE UNDER SEPARATE PERMIT**



